

Quick guide to FTPS and MediCase

1. Examine the patient
2. Decide if inclusion criteria are fulfilled*
3. Export images and clips to USB from ultrasound machine
4. Before doing so, anonymize the exam
5. Upload the exam from USB to the FTPS server**
6. Login to MediCase www.medicase.se/en/ with username (e-mail address) and password
7. Two-steps verification, code sent to cell phone as text message
8. Hit the button "Add a new subject"
9. Select site and hit the button "Add a subject"
10. Include the patient by filling in the CRF "Inclusion criteria" and "Inclusion"
11. Complete the CRF "Baseline fetal echo"

* Inclusion criteria

A. All of the following echocardiographic criteria need to be satisfied between **23+0 and 31+6** weeks (z-scores according to Schneider):

1. Aortic valve stenosis with antegrade flow through the valve
2. Predominantly left-to-right shunt at the atrial level
3. Predominantly retrograde flow in the aortic arch between the first two brachiocephalic vessels
4. Qualitatively depressed left ventricular function
5. LV end-diastolic diameter z-score $> +/0$
6. Left ventricular inlet length in diastole, z-score according to gestational age
 - a. $GA \leq 24+6$: Z-score $> \pm 0$
 - b. $GA 25+0$ to $27+6$: Z-score > -0.75
 - c. $GA \geq 28+0$: Z-score > -1.50
7. Mitral valve diameter in diastole z-score > -2.0

B. All of the following postnatal treatment options need to be available:

Surgical or catheter based aortic valvotomy

Ross-Konno surgery

Norwood or hybrid stage-one surgery

**Transfer of images

All echocardiographic examinations; baseline fetal echo, follow-up fetal echo and postnatal echo, are to be uploaded to the Core Lab FTPS-server (DSBUSKARDMMFTPS). You will receive username and password core lab. In case you need support, contact Carina Olausson at core lab, carina.olausson@vgregion.se or khamees.elkhateeb@gu.se at IT Department University of Gothenburg

Copy the files into the one folder on the right.

Connect to DSBUSKARDMMFTPS FTPS server by following the instructions below.

1: You need to use an FTPS client to access the server, it's not accessible via File Explorer or Web browser. We recommend FileZilla Client which can be downloaded and installed at this address: <https://filezilla-project.org/download.php?type=client> . If you do not have enough rights on your computer to install the client, then please consult your IT Department. FTPS traffic is encrypted and more secure than normal FTP.

2: Once the client is installed, you need to fill the connection information as shown below manually (Or proceed to step 3 to import the settings automatically)

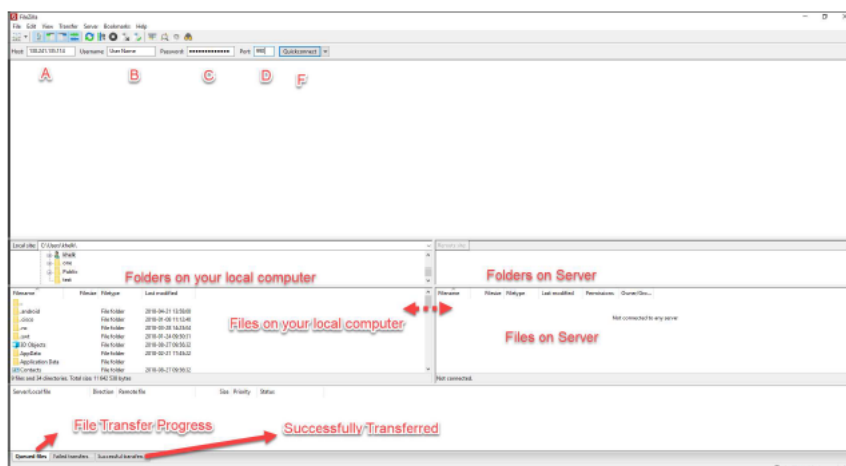
A: Host: **130.241.170.44**

B: Username: The username that you received.

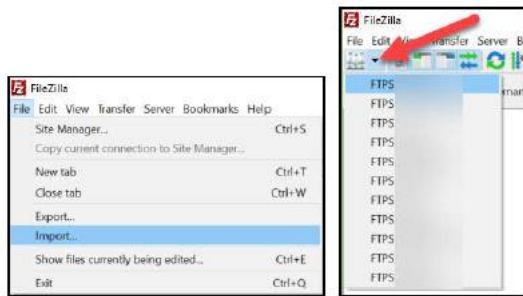
C: Password: The password that you received.

D: Port: 990

F: Click to connect.



3: Import the settings sent to you by clicking File->Import->Chose the XML file sent to you. Then connect by choosing the SITE from Sites button



Notes:

- 1: At the first connection you might receive a certificate notification/warning. Please do accept the certificate.
- 2: In the lower section, you can see Your **Local files** (Left) and the **Files on server** (right). You can transfer the files by Dragging and dropping them or you can drag the files directly from your File Explorer to FileZilla (Files on Server) section.
- 3: Keep the program open until all the files are fully transferred. You can see the progress on the Lower-right section (File Transfer Progress).
- 4: Total disk size on server is 300GB.
- 5: FileZilla official tutorial:

[https://wiki.filezilla-project.org/FileZilla_Client_Tutorial_\(en\)](https://wiki.filezilla-project.org/FileZilla_Client_Tutorial_(en))

<https://youtu.be/pPA0i6GifZ4>